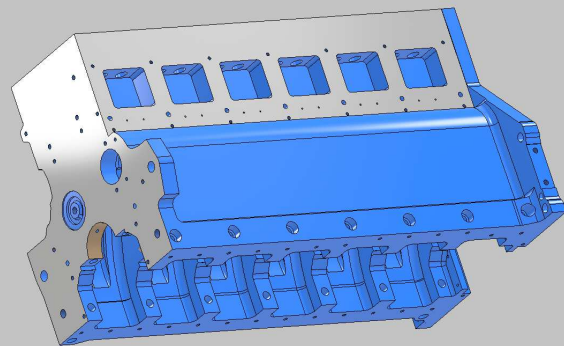
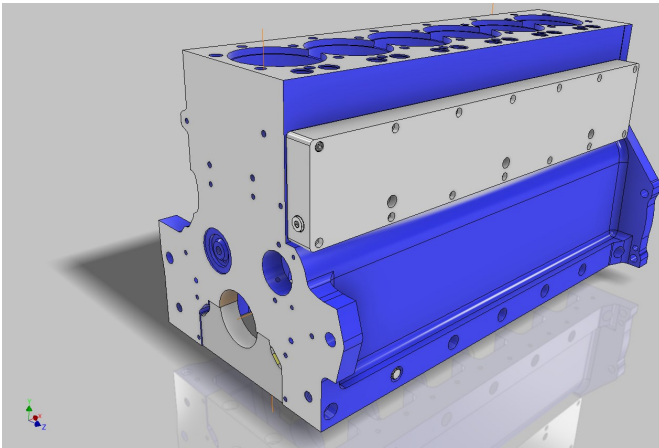
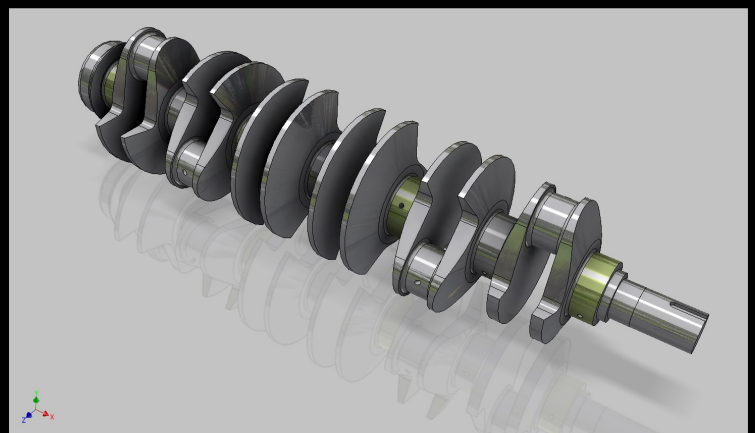


FORD TRACTOR RECAST ENGINE BLOCKS

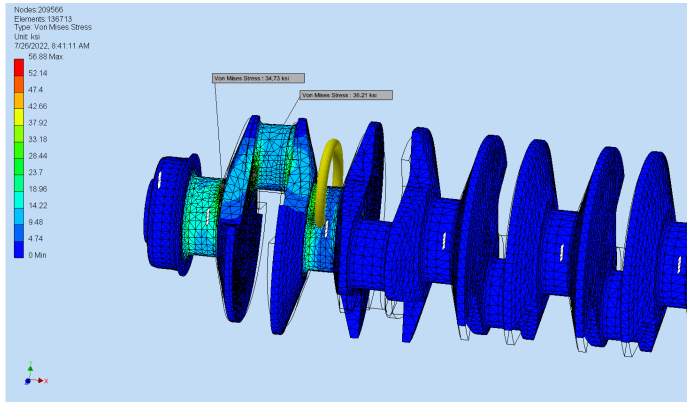


CUSTOM FORD BILLET CRANKSHAFTS



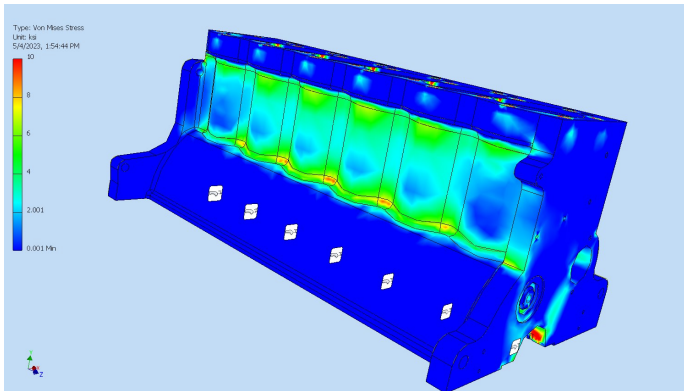
BAUM MACHINE INC.

N253 Stoney Brook Rd., Appleton, WI 54915
Ph. (920) 738-6613 Fax (920) 738-0571



BILLET CRANKSHAFTS

- FINITE ELEMENT ANALYSIS (FEA) IS APPLIED TO ALL BAUM MACHINE PRODUCTS DURING THE DESIGN STAGE.
- STROKES FROM 4.00 TO 6.00 INCH
- MATERIAL 4340 Rc 40 WITH CHROMED JOURNALS FINISH GROUND



RECAST ENGINE BLOCKS

- CID FROM 504 TO 640
- LIGHT SUPER STOCK, SUPER FARM, LIGHT PRO-STOCK & LIMITED PRO-STOCK
- MATERIAL ASTM DI 80-55-06-DUCTILE IRON
- ALL PRIMARY DIMENSIONS MATCH FORD FACTORY BLUEPRINTS
- NTPA & PPL LEGAL BLOCKS
- 2 BLOCK SIZES STANDARD AND LIGHT SUPER STOCK
- STANDARD BLOCK HAS 7 CROSS-BOLTED MAIN CAPS
- SS LIGHT BLOCK HAS 7 4-BOLT MAIN CAPS
- ALL BLOCKS HAVE EXTERNAL PRIORITY OIL GALLEY COMBINATION LIFTER COVER
- INTERNAL CLEARANCES & PISTON TRAVELS LAID OUT BEFORE SHOP RELEASE OF PARTS, SO EVERYTHING FITS WHEN ASSEMBLED
- ALSO CATAPILLAR C15 ENGINE BLOCKS AND BILLET CRANKSHAFTS ARE NOW AVAILABLE
- NEW ADDITION, ALLIS-CHALMERS D21 ENGINE BLOCK

